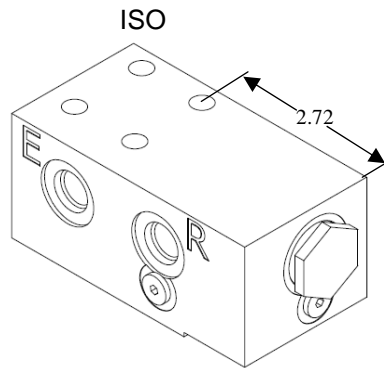
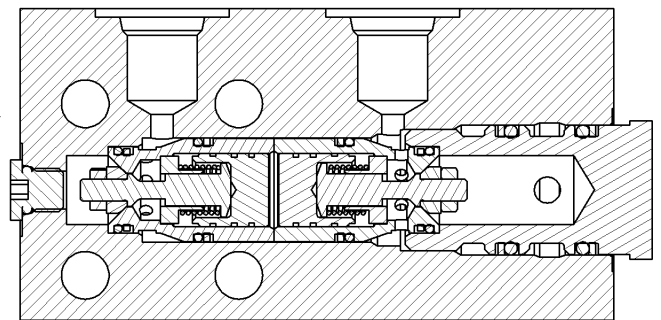


**5.0 AND 6.0 INCH BORE STABILIZER
LEG CHECK VALVE REDESIGN**

ORIGINAL DESIGN 300519

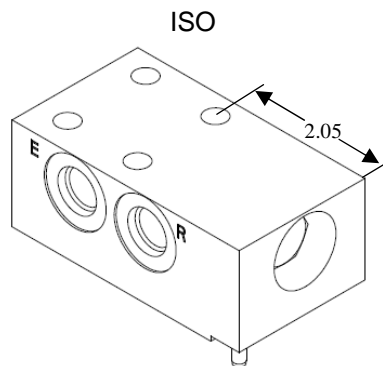


TOP SECTION

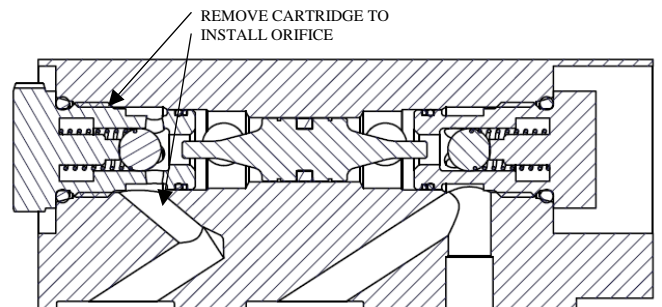


ORIGINAL VALVE REPAIR KIT 300085

NEW DESIGN 1010001936



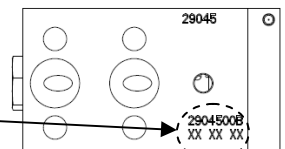
SIDE SECTION



RETROFIT KIT: 1010001971
VALVE SERVICE KIT: 1010001972 (REBUILD)
ORIFICE KIT: 1010002068 (INCLUDED IN 1010001971)

NOTE:

1. IF DATE CODE ON BOTTOM OF VALVE IS PREVIOUS TO 3-19-10 THEN USE ORIFICE KIT 1010002013



2. INSTALL ORIFICE ONLY IF REQUIRED TO CONTROL DECENT SPEED OR ELIMINATE VALVE CHATTER IN APPLICATIONS WITH LOW FLOW PUMPS OR NO DOWNSTREAM FLOW CONTROLS

! NOTE

- RELEASE ALL HYDRAULIC PRESSURE BEFORE SERVICING CHECK VALVES (CYCLE DIRECTIONAL VALVE)
- VALVE CARTRIDGE CAN BE PARTIALLY UNSCREWED TO RELIEVE PRESSURE BEFORE FULLY EXTRACTING CARTRIDGE - REMOVE SLOWLY
- BLOCK EQUIPMENT/ TRAILER SO NO WEIGHT IS BEING SUPPORTED BY THE HYDRAULIC LEG
- DISCONNECT HYDRAULIC LINES
- REMOVE LEG IF REQUIRED
- IF REPLACING CHECK VALVES, ALSO REPLACE:
 - GASKET
 - FACE SEAL O-RINGS
 - ATTACHMENT BOLT (INCLUDED IN 1010001971 KIT)