


Hydraulic Stabilization System Accessories (Measurements shown in inches | mm)

Part #	Power	# of Valves	Reservoir Size Gallon Liter	Power Beyond	Pendant Control	Notes
--------	-------	-------------	----------------------------------	-----------------	--------------------	-------


SYSTEM CONTROL BOXES

3510000218	12V DC	2 Solenoid	6.5 24.6	No	Yes		
300215		2	6.5 24.6	No	No		
901000687		2	6.5 24.6	Yes	No		
9010000769		3	13 49.2	Yes	No		
3510000227		4 Solenoid	6.5 24.6	No	Yes		
300217		4	6.5 24.6	No	No		
300229		4	6.5 24.6	Yes	No		
9010000786		4	13 49.2	Yes	No		
300219		6	6.5 24.6	No	No		
300231		6	6.5 24.6	Yes	No		
300546		None	11 41.6	No	No		Power Unit Only

3510000212	24V DC	2 Solenoid	6.5 24.6	No	Yes		
300251		2	6.5 24.6	No	No		
300263		2	6.5 24.6	Yes	No		
9010000770		3	13 49.2	Yes	No		
3510000226		4 Solenoid	6.5 24.6	No	Yes		
300253		4	6.5 24.6	No	No		
300265		4	6.5 24.6	Yes	No		
9010000789		4	13 49.2	Yes	No		
300255		6	6.5 24.6	No	No		
300267		6	6.5 24.6	Yes	No		
300540		None	11 41.6	No	No		Power Unit Only

300314	115/208-230V 1PH 60Hz	2	6.5 24.6	No	No		
300326		2	6.5 24.6	Yes	No		
300316		4	6.5 24.6	No	No		
300328		4	6.5 24.6	Yes	No		
300318		6	6.5 24.6	No	No		
300330		6	6.5 24.6	Yes	No		
300568		None	11 41.6	No	No		Power Unit Only

300350	230/460V 3PH 60 Hz	2	6.5 24.6	No	No		
300362		2	6.5 24.6	Yes	No		
90010000771		3	13 49.2	Yes	No		
300352		4	6.5 24.6	No	No		
300364		4	6.5 24.6	Yes	No		
9010000790		4	13 49.2	Yes	No		
300354		6	6.5 24.6	No	No		
300366		6	6.5 24.6	Yes	No		
300569		None	11 41.6	No	No		Power Unit Only

	Power	Retract	Extend	PSI	Auto Boost	
100104	Air Operated	6 qt (5.7 liter)	11qt (10.4 liter)	2500	No	
100106	Air Operated	6 qt (5.7 liter)	11qt (10.4 liter)	3000	No	
101676	Air Operated	6 qt (5.7 liter)	11qt (10.4 liter)	3000	Yes	

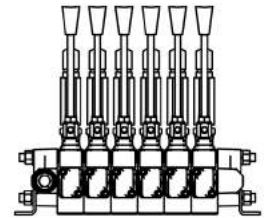
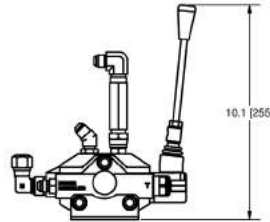
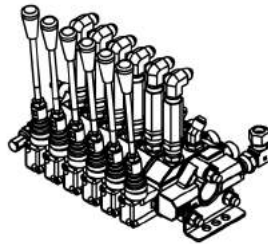
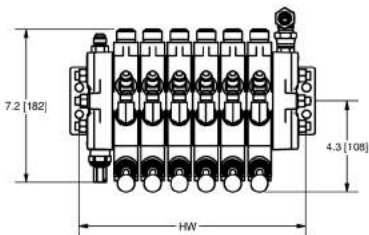
	Power	GPM	Reservoir Size	RPM	
300600	Gasoline	3.5	11 41.6	3600	

Hydraulic Stabilization System Accessories (Measurements shown in inches | mm)

Part #	Number of Valves	Notes
--------	------------------	-------

HYDRAULIC VALVE ASSEMBLIES

3025-2	2	Motor Spool
3026-2	2	Last Section Closed
3027-2	2	Includes Power Beyond
3025-3	3	Motor Spool
3026-3	3	Last Section Closed
3027-3	3	Includes Power Beyond
3025-4	4	Motor Spool
3026-4	4	Last Section Closed
3027-4	4	Includes Power Beyond
3025-5	5	Motor Spool
3026-5	5	Last Section Closed
3027-5	5	Includes Power Beyond
3025-6	6	Motor Spool
3026-6	6	Last Section Closed
3027-6	6	Includes Power Beyond
3025-8	8	Motor Spool
3026-8	8	Last Section Closed



Part #	Description	Plate Thickness	Bolt Pattern	# of Mounting Holes
--------	-------------	-----------------	--------------	---------------------

MATCHING MOUNTING PLATES (optional) - For use when fabricating custom mounting points

100502	For a 3.5 89 or 4.0 102 Bore Leg	0.375 10	2.25 x 7.5 57 x 190	8
100509	For a 3.5 89 or 4.0 102 Bore Leg	0.375 10	2.25 x 7.5 57 x 190	10
100226	For a 4.0 102 or 5.0 127 Bore Leg	0.375 10	2.25 x 7.5 57 x 190	14
300035	For a 5.0 127 or 6.0 152 Bore Leg	0.5 13	2.25 x 7.5 57 x 190	22
300500	For a 5.0 127 Bore Stiff Leg	0.5 13	2.25 x 9.5 57 x 241	18
300165	For a 6.0 152 Bore Stiff Leg	0.5 13	2.25 x 13.0 57 x 330	22

MOUNTING ACCESSORIES

100357	Straight Ear
100353	Angle Ear
100354	Curved Ear
100346	Split Collar Assembly for 3.5 89 Leg
100348	Split Collar Assembly for 4.0 102 Leg

Please contact Power-Packer about optional stabilization accessories.